

# DS-3000



## System configuration

### Hardware



The 2-channel units or 4-channel units can be combined to expand to up to a 32-channel system.

Model	Name
DS-3102	2ch main unit (2ch basic set)
DS-3104	4ch main unit (4ch basic set)
DS-0362	2ch input unit (for expansion)
DS-0364	4ch input unit (for expansion)
DS-0371	1ch signal output module (built-in)
DS-0372	2ch signal output unit

### I/F(ONO-LINK3)

**DS-0396** (For desktop-type PC)  
\*PCI Express × 1 slot



**DS-0397** (For notebook-type PC)  
\*PC card



**DS-0398** (For notebook-type PC)  
\*Express card



The cables are sold separately.  
(1.5m / 3m / 10m / 20m)

### Software



### DS-2000 series (4ch to 8ch)<sup>\*4)</sup>

Model	Name
DS-0221WA	General-purpose FFT analysis
DS-0222WA	Tracking analysis
DS-0223WA	1/1 and 1/3 real-time octave analysis
DS-0250WA	Throughput disk function
DS-0251A	File export function

\*4) The software without "A" in the end of the model name cannot be used for the DS-3000 series.

### Accessories

Model	Name
CC-0025	Soft carrying case
CC-0026	Hard carrying case
—	AC adapter <sup>*5)</sup>

\*5) Required for a system of 14ch or larger.

## General specifications

<b>Number of input channels</b>	2 to 32ch	
<b>Input connector</b>	BNC (voltage input / CCLD switching)	
<b>Power supply for sensor</b>	4 mA / 24 V	
<b>Input voltage range</b>	10 mVrms to 10 Vrms (7 ranges)	
<b>Frequency range</b>	DC to 40 kHz	
<b>Dynamic range</b>	110 dB	↑UP
<b>Number of signal output channels</b>	0 to 5ch	↑UP
<b>Signal output FFT points</b>	64 to 16384 points	
<b>Real-time rate</b>	40 kHz range, 8ch, 2048 points	↑UP
	20 kHz range, 16ch, 2048 points	↑UP
<b>Throughput speed</b>	40 kHz range, 16ch	↑UP
	20 kHz range, 32ch	↑UP
<b>Rotational speed range</b>	60 to 192,000 r/min	↑UP
	(based on maximum analysis order)	
<b>Outer dimensions</b>	269 mm(W) × 71 to 267 mm(H) × 217 mm(D)	
	Including a protector	
<b>Power-supply voltage</b>	100 to 240 VAC 15 VDC	
<b>Power consumption</b>	25 to 95 VA (at 15 VDC)	
<b>Operating temperature range</b>	0 to +40 °C (with no condensation)	
<b>Weight</b>	2.2 kg (with 4ch) to 8.2 kg (with 32ch)	
<b>Cooling fan</b>	None (natural cooling: up to 12ch)	

↑UP : Upgraded function compared to the DS-2000 series.

## Operating environment

OS : Windows® XP(SP2. Net Framework 2.0 or later) / Windows® Vista(SP1) / Windows® 7 **NEW**  
 CPU : Intel® Pentium® 4 / 2 GHz or more  
 Memory: Required 1 GB or more  
 HDD : Required 1 GB or more

Note : When the software of the DS-3000 series is installed, condition of the PC is also set up so that the DS-3000 series can be operated properly. If the settings are changed by the customer, some operation and performance are not guaranteed.  
 • When condition of the PC is made into "Eco Mode" or "power-saving mode", it may become impossible to fulfill specifications, such as throughput speed.  
 • The ONO-LINK II interface can also be used to connect with the DS-3000 series only when the application and driver for the DS-3000 series are installed on the PC. The application and driver for the DS-2000 are not available for the DS-3000 series. For details, please contact your nearest distributor or send an e-mail to us; overseas@onosokki.co.jp.  
 • Only the 32-bit version Windows® OS is available.

●Microsoft® Windows® are registered trademarks of Microsoft Corporation in the United States and other countries.  
 ●Other product names and model names are trademarks or registered trademarks of each individual company.  
 The copyrights are reserved by each individual company.

**ONOSOKKI**

\*Outer appearance and specifications are subject to change without prior notice.  
 URL: <http://www.onosokki.co.jp/English/english.htm>  
 E-mail: [overseas@onosokki.co.jp](mailto:overseas@onosokki.co.jp)

**U.S.A.**  
 Ono Sokki Technology Inc.  
 2171 Executive Drive, Suite 400,  
 Addison, IL 60101, U.S.A.  
 Phone : +1-630-627-9700  
 Fax : +1-630-627-0004  
 E-mail : [info@onosokki.net](mailto:info@onosokki.net)  
 URL : <http://www.onosokki.net>

**THAILAND**  
 Ono Sokki (Thailand) Co., Ltd.  
 29/67 Moo 5 Tivanon Road, Pakkred,  
 Nonthaburi 11120, Thailand  
 Phone : +66-2-964-3884  
 Fax : +66-2-964-3887  
 E-mail : [osth\\_sales@onosokki.co.jp](mailto:osth_sales@onosokki.co.jp)

**P.R. CHINA**  
 Ono Sokki Beijing Office  
 Beijing Jing Guang Center 3510,  
 Hu Jia Lou, Chao Yang Qu,  
 Beijing 100020, P.R.China  
 Phone : +86-10-6597-3113  
 Fax : +86-10-6597-3114  
 E-mail : [onosokki@bbrn.cn](mailto:onosokki@bbrn.cn)

**WORLDWIDE**  
 Ono Sokki Co., Ltd.  
 3-9-3 Shin-Yokohama, Kohoku-ku,  
 Yokohama 222-8507, Japan  
 Phone : +81-45-476-9712  
 Fax : +81-45-470-7244  
 E-mail : [overseas@onosokki.co.jp](mailto:overseas@onosokki.co.jp)



# DS-3000

Multi-Channel Data Station **DS series**

*The next generation in signal analysis*



**Old Model  
(Reference only)**

**ONOSOKKI**

# "Top-notch performance, top-notch function, combined with easy handling"

After thoroughly investigating the question of "What makes a measuring instrument easy to use," Ono Sokki has developed a new type of data station, the **DS-3000** that performs at overwhelming throughput speed. With specifications that surpass those of the DS-2000, this new model will significantly reduce your measurement time.



Multi-Channel Data Station  
**DS series**

# DS-3000

## Speedy

Double the analyzing speed (real-time rate) \*1).

- 40-kHz range FFT online analysis: up to 8ch (up to 4ch in the DS-2000)
- 20-kHz range FFT online analysis: up to 16ch (up to 8ch in the DS-2000)

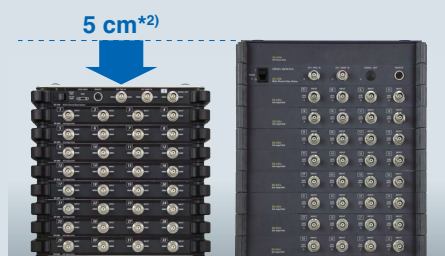
Double the data recording (throughput) speed \*1).

- 40-kHz range: up to 16ch (up to 8ch in the DS-2000)
- 20-kHz range: up to 32ch (up to 16ch in the DS-2000)



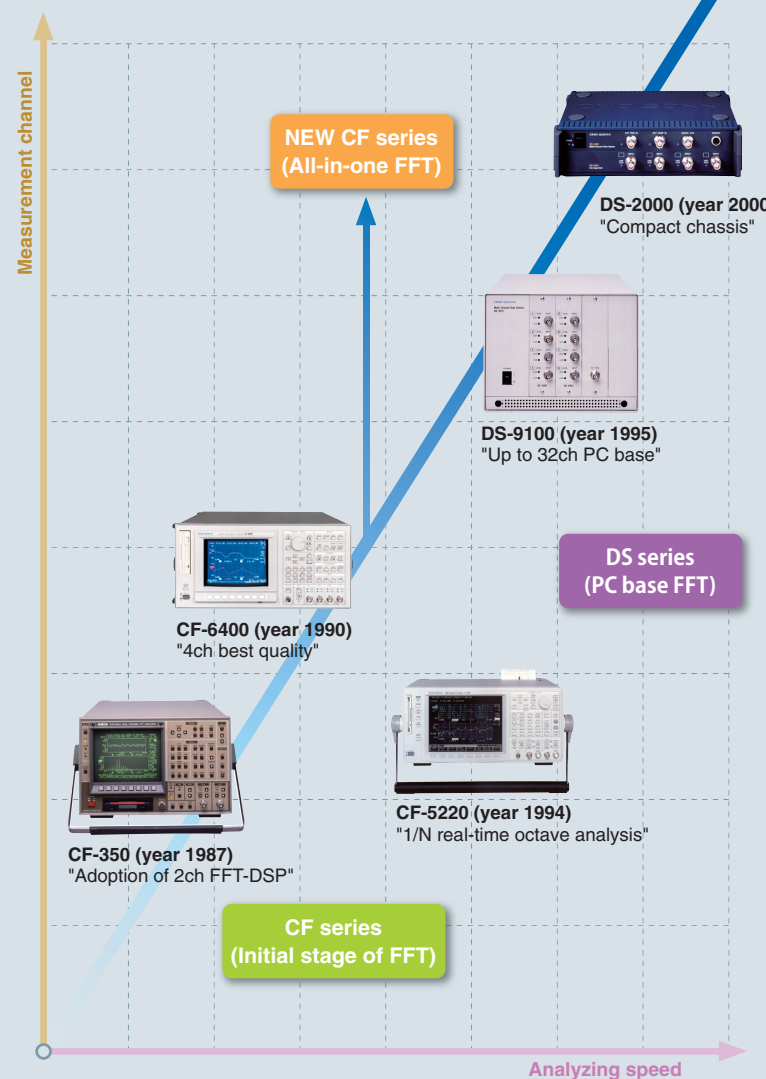
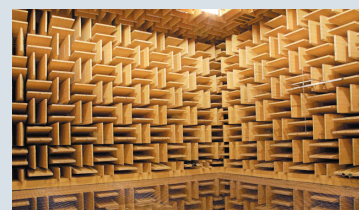
## Small Size

More compact than the conventional model (DS-2000).



## Silent Measurement

No cooling fan required (up to 12-channel). \*3)  
No measurement interference when placed near a quiet object.



## Smart Design

Universally-accepted "stylish" measuring instrument. Measurer-friendly functions are incorporated in the sophisticated body.

### ONO-LINK3 connector

The larger-size connector is placed on the front panel, and robustness and simplicity of detaching are significantly increased.



### Signal level LED

A line-type LED is adopted to enhance both visibility and aesthetic functionality.



### BNC connector

The pitch between connectors is made broader in compact unit. This design allows JPJ connectors to be attached to all channels.



### Large protector

The protector spaciously encloses the chassis and protects the unit from unexpected contingencies in the field. Easy-to-carry design is also advantageous.



## Application Software

DS-2000 series

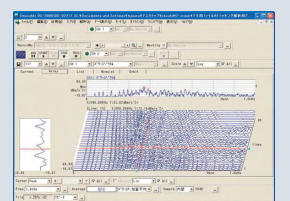
Online analysis

FFT

RTA

Tracking

Recording



\*1) In comparison to Ono Sokki's DS-2000. (When connecting to the ONO-LINK3) \*2) 32-channel system is approximately 5 cm thinner. \*3) A cooling fan is provided on the backside of the chassis of the 14-channel system or larger.