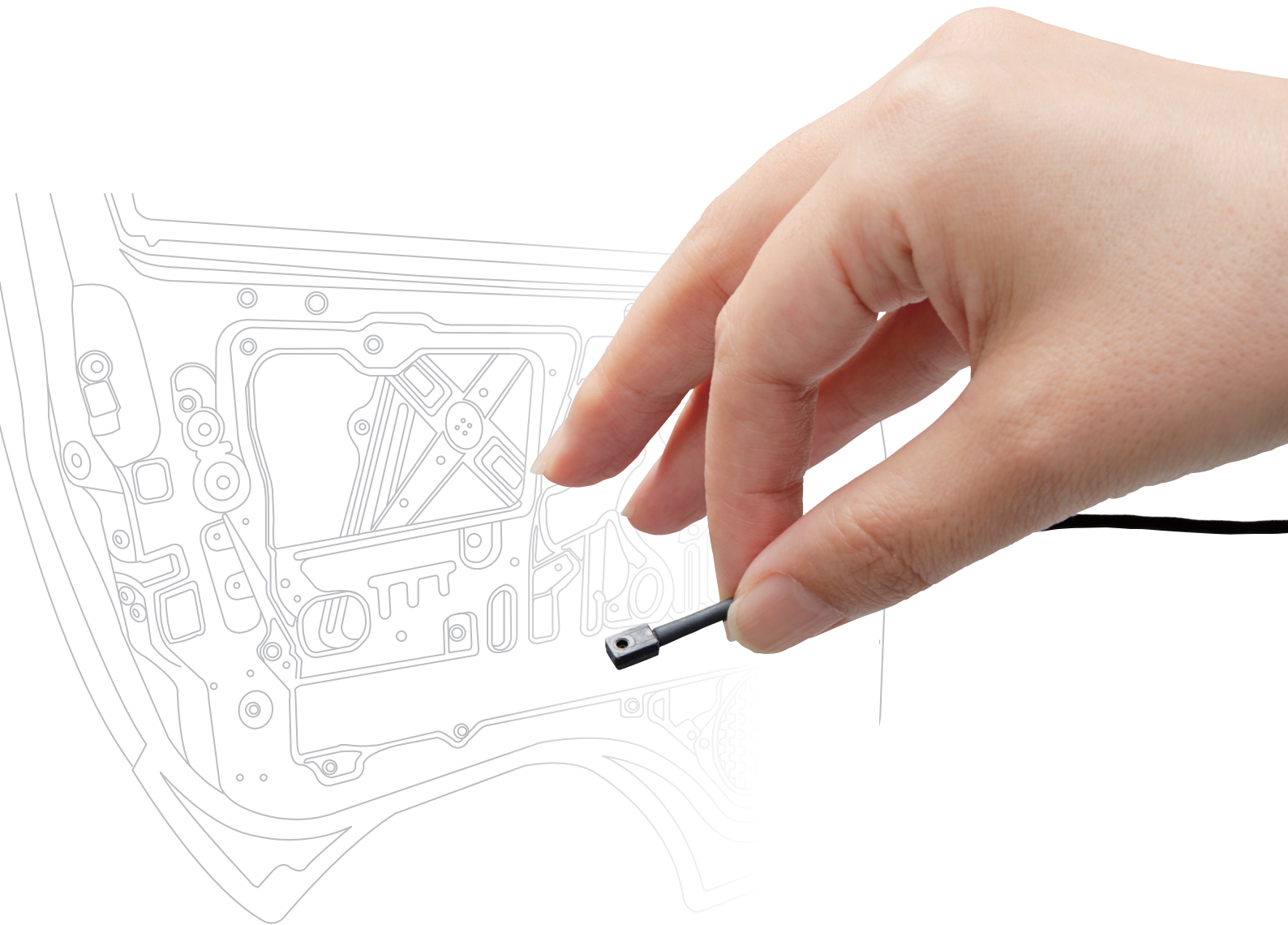


MB-2200M10

ONOSOKKI

Ultraminiature Microphone

Easily measured even in narrow spaces



Ultra compact

Easy sound pressure measurement
even in limited spaces

Super lightweight

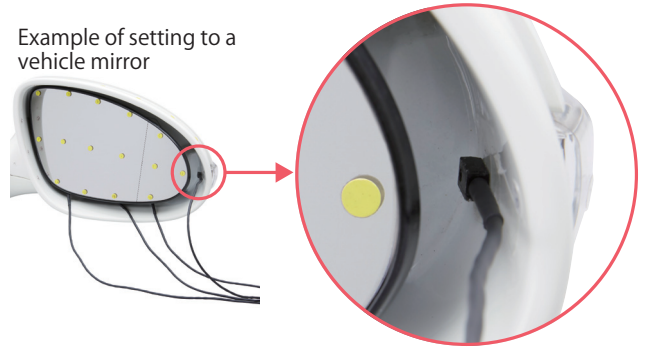
Can be fixed
with double-sided tape

Overview

This ultra compact, lightweight microphone enables measurement in a narrow space that has been difficult to install so far, without giving influence to the sound field. Analysis device (CCLD) such as FFT Analyzer can be connected directly.



Example of setting to a vehicle mirror



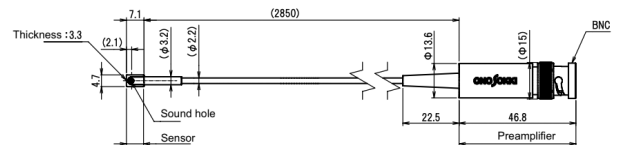
Application examples

- Sound pressure measurement inside of a target
- Measurement of sound pressure distribution by simultaneous multi point measurement

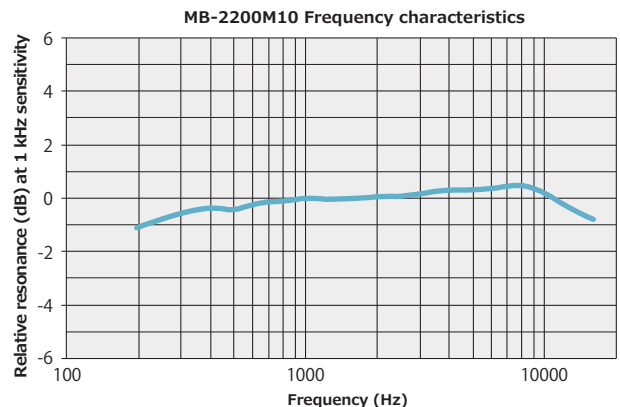
Specification

Response type	Sound field type
Sensitivity (1 kHz)	-37.0 ± 3.0 dB re. 1V/Pa (14 mV/Pa)
Frequency range	200 Hz to 16 kHz (±2.5 dB)
Max. sound pressure level	114 dB (1 kHz, total harmonic distortion: 3%)
Self-noise level	36 dB (A) or less
Operating temperature range	-30 to +80°C :2500 mm or less from tip of a sensor part ±0 to +50°C :2500 mm or more from tip of a sensor part (to the connector of preamplifier section)
Operating humidity range	0 to 90% RH (with no condensation)
Storage temperature range	-10 to +60°C (Sensor and amplifier parts)
Storage humidity range	0 to 90% RH (with no condensation)
Weight	Approx. 48 g (total) Approx. 0.3 g (sensor part)
Power requirement	CCLD (Constant current drive) Current: 2.2 to 4.9 mA (Rated 4.0 mA) Voltage: DC 18 V to 26 V (Rated 24 V)
Applicable standard	CE marking EMC Directive 2014/30/EU Standard EN61326-1 RoHS Directive 2011/65/EU Standard EN50581 TEDS IEEE 1451.4:2004 Ver. 1.0 Template: 27 Microphone with built-in preamplifier
Accessory	Data sheet x 1 Instruction manual (Japanese /English) x1 for each

Outer dimensions



Frequency characteristics



Option

MB-0210 Ultraminiature Microphone



<Note>
Usage with SC-2600 or SC-2120A.
The calibration value cannot be guaranteed in combination with other calibrators.

Related products

SC-2600 Sound Calibrator

In addition to feedback control, it has built-in compensation functions for static pressure and temperature, allowing it to generate a stable sound pressure. When calibrating ultra-miniature microphone, a dedicated micro microphone calibration adapter (MB-0210) is required.



Applicable Standard	JIS C 1515: 2004 Class 2 IEC 60942: 2003 Class 2 ANSI S1.40-2006 (R2011) Class 1
Nominal sound pressure level	94 dB
Nominal frequency	1000 Hz

SR-2210 2-channel Sensor Amplifier

Accepts constant current line drive sensors to be able to connect to analyzers and recording devices such as DAT that are not compatible with the constant current amplifiers.



Constant Current Power	Current: 2.4 mA Applied voltage: approx 18 V
No. of channels	2
Output voltage	12.6 dBVrms or less (±6V)
Max. output cable extension	Within 30 m
Power supply	Type AA battery cell x 4 AC adapter: PB-7090 (sold separately)
Battery life	20 hours or more *When type AA alkaline battery cell (LR06) used.

ONOSOKKI

WORLDWIDE ONO SOKKI CO., LTD.

1-16-1 Hakusan, Midori-ku, Yokohama 226-8507, Japan
Phone : +81-45-935-3918 Fax : +81-45-935-3808
E-mail : overseas@onosokki.co.jp

* Outer appearance and specifications are subject to change without prior notice.

URL : <https://www.onosokki.co.jp/English/english.htm>

U.S.A.

Ono Sokki Technology Inc.
2171 Executive Drive, Suite 400,
Addison, IL 60101, U.S.A.
Phone : +1-630-627-9700
Fax : +1-630-627-0004
E-mail : info@onosokki.net
<https://www.onosokki.net>

THAILAND

Ono Sokki (Thailand) Co., Ltd.
1/293-4 Moo.9 T.Bangphud
A.Pakkred,
Nonthaburi 11120, Thailand
Phone : +66-2-584-6735
Fax : +66-2-584-6740
E-mail : sales@onosokki.co.th

INDIA

Ono Sokki India Private Ltd.
Plot No.20, Ground Floor, Sector-3,
IMT Manesar Gurgaon-122050,
Haryana, INDIA
Phone : +91-124-421-1807
Fax : +91-124-421-1809
E-mail : osid@onosokki.co.in

P.R.CHINA

Ono Sokki Shanghai Technology Co., Ltd.
Room 506, No.47 Zhengyi Road, Yangpu
District, Shanghai, 200433, P.R.C.
Phone : +86-21-6503-2656
Fax : +86-21-6506-0327
E-mail : admin@shonosokki.com