

# New lineup for LA-7000 series

ONOSOKKI

## LA-7700 High sensitivity type model and new options

- For the minute sound measurement: LA-7700 (Class 1)
- For the ultra low frequency measurement: LA-0709 (for LA-7500)
- Offline analysis function (LA-0704) supports Sound quality evaluation/Level simulator functions.

### High sensitivity type LA-7700 (Class 1)



#### Multi task sound level meter with high sensitivity

Measurement, analysis and recording while listening.

#### Helps to achieve "Quiet and comfortable sound"

The microphone with less than 10 dB of self-noise achieves the measurement lower to 20 dBA such as the very low annoying sound, which has been difficult to measure. Helpful for noise countermeasures of the operating noise from electrical home appliances and automobiles etc.

#### More advanced analysis on site with various lineup of options

- Recording
- FFT Analysis
- Offline Analysis
- Level simulator
- RTA Analysis
- Sound quality

#### <Major specifications>

Measurement frequency range: 10 Hz to 20 kHz

Measurement level range

A: 20 to 128 dB

C: 28 to 128 dB

Z: 34 to 128 dB

Self-noise level

A: 12 dB or less

C: 20 dB or less

Z: 26 dB or less

Measurement Act: TF228

#### Conforming standard

• JIS C 1509-1: 2017 Class 1

• JIS C 1516: 2020 Class 1

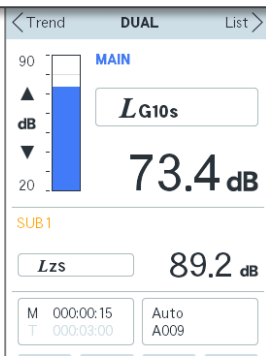
• IEC 61672-1: 2013 Class 1

• ANSI S1.4-2014/Part1 Class1

### Ultra low frequency sound measurement function

LA-0709\* :option for LA-7500

LA-7500+0709



LA-7500 High performance type Sound level meter (Class 1)  
LA-0702 1 / 3 octave band analysis function

NEW

\*Installation work by Ono Sokki is required when adding the LA-0709 after purchasing the LA-7500. Please contact us for details.

#### Enables to measure the ultra low frequency sound other than the audible range.

Efficient to help making a comfortable working environment by reducing the ultra low frequency sounds which will possibly be a factor of causing an adverse effect to the health such as psychological pressure and physical discomfort.

#### <Measurement target>

Household fuel cells/water heaters, refrigerators, fans, trains, cars, airplanes, compressors, wind power generation, etc.

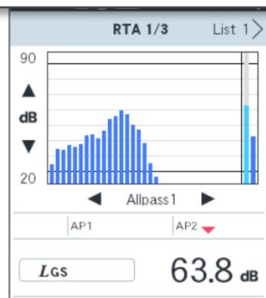
#### <Major specifications>

Meas. frequency range: 1 Hz to 20 kHz or 10 Hz to 20 kHz  
(selectable by switching mode)

Frequency weighting: G, A, C, Z-weighting selectable

Time weighting: Selectable from **10 s**, 10 ms, Fast, Slow, Impulse

LA-7500+0709+0702

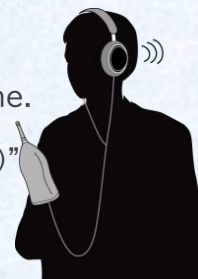


# Offline analysis function (LA-0704) supports Sound quality evaluation (SQE)/Level simulator(LSIM)

## Selectable analysis functions from various options, both online and offline

The offline Analysis Function (LA-0704) is very convenient when you cannot spend much time on site.

You can analyze the measured data recorded on the main unit by offline. "Sound quality evaluation (SQE) mode" and "Level simulator (LSIM) mode" can now be selected as well as "Re-calculation (Leq calculation)" and "RTA, FFT Analysis (frequency analysis)".

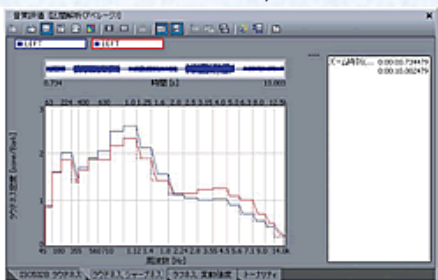


\*Offline Analysis Function : installed in the LA-0704 (Sound recording function)  
Customers who already have the LA-0704 can use them to upgrade the firmware.

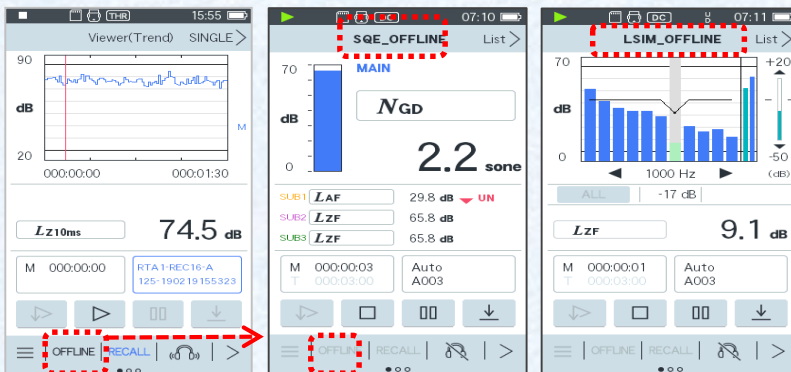
### [Functions of Offline analysis] Each optional functions are required.

SLM (Single / Dual / Quad mode)	: standard function
RTA1 / 1, Filter1 / 1 mode	: standard function
RTA1/3, Filter1/3 mode	: LA-0702 required
FFT mode	: LA-0703 required (Trigger function cannot be used.)
Sound quality evaluation (SQE) mode	: LA-0708A required
Level simulator mode	: LA-0707 required (Editing during playback is not available.)

\*The various secondary processing software for further analysis are available.



OS-2000 series time-series data analysis tool  
Sound quality evaluation (OS-0271)



Offline analysis

## Others

### <Addition of optional functions after purchase>

When adding the LA-0709 to the LA-7500 you have, installation work is done by Ono Sokki. Please contact the nearest distributor or Ono Sokki sales office nearby.

Before you contact to Ono Sokki

- Check the serial number of the sound level meter to add the function.
- Upgrade the firmware to the latest version before adding optional software.  
(The SD card for adding options includes firmware software and option software.)

→ FAQ



### <Upgrade of firmware software only>

- You can download the latest firmware from the user page on website.  
(The registration of the product information is required to log in to the user page.)
- Save the latest firmware to the SD card attached to the LA-7000 and upgrade.

→ FAQ



- Please read thoroughly the instruction manual carefully before using the product for correctly and safely use.
- Outer appearance and specification are subject to change without prior notice.



**WORLDWIDE ONO SOKKI CO., LTD.**  
1-16-1 Hakusan, Midori-ku, Yokohama, 226-8507, Japan  
Phone : +81-45-935-3918 Fax : +81-45-930-1808  
E-mail : overseas@onosokki.co.jp

\*Outer appearance and specifications are subject to change without prior notice.  
URL : <https://www.onosokki.co.jp/English/english.htm>

**U.S.A.**  
Ono Sokki Technology Inc.  
2171 Executive Drive, Suite 400  
Addison, IL, 60101, U.S.A.  
Phone : +1-630-627-9700  
Fax : +1-630-627-0004  
E-mail : info@onosokki.net  
<http://www.onosokki.net>

**THAILAND**  
Ono Sokki (Thailand) Co., Ltd.  
1/293-4 Moo.9 T.Bangphud  
A.Pakkred  
Nonthaburi 11120, Thailand  
Phone : +66-2-584-6735  
Fax : +66-2-584-6740  
E-mail : sales@onosokki.co.th

**INDIA**  
Ono Sokki India Private Ltd.  
Plot No.20, Ground Floor, Sector-3,  
IMT Manesar Gurgaon-122050,  
Haryana, INDIA  
Phone : +91-124-421-1807  
Fax : +91-124-421-1809  
E-mail : osid@onosokki.co.in

**P.R.CHINA**  
Ono Sokki Shanghai Technology Co., Ltd.  
Room 506, No.47 Zhengyi Road, Yangpu  
District, Shanghai, 200433, P.R.C.  
Phone : +86-21-6503-2656  
Fax : +86-21-6506-0327  
E-mail : admin@shonosokki.com