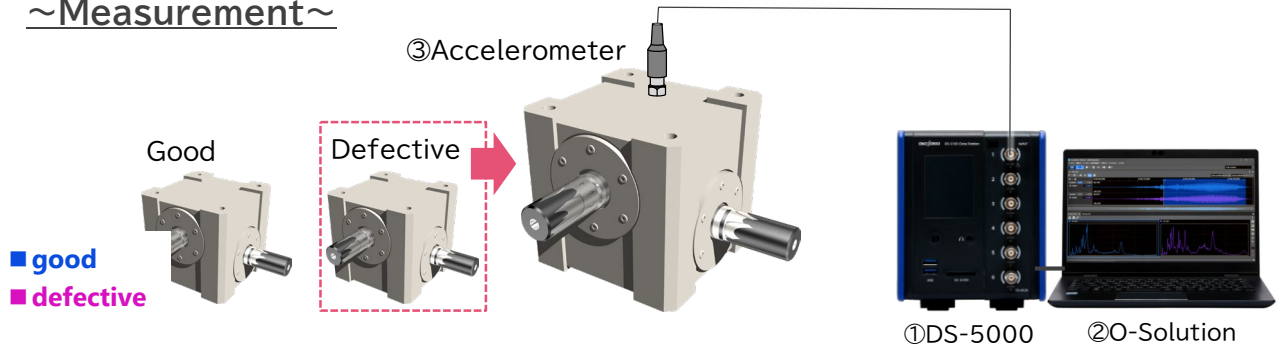


Determine the index of pass/fail judgment of gear

~Overview~

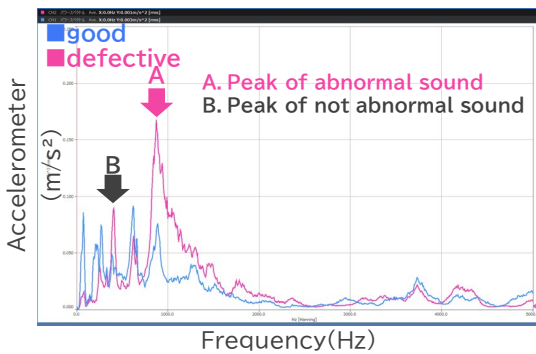
Defective gears in automobile power components was found in actual driving test. It was caused by the phenomenon we did not expect when we set up the index for pass/fail judgment for the production checks. Compare good and defective products and determine new pass/fail judgment index.

~Measurement~

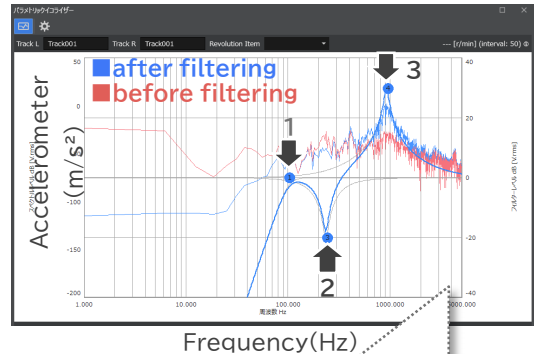


~Analysis~

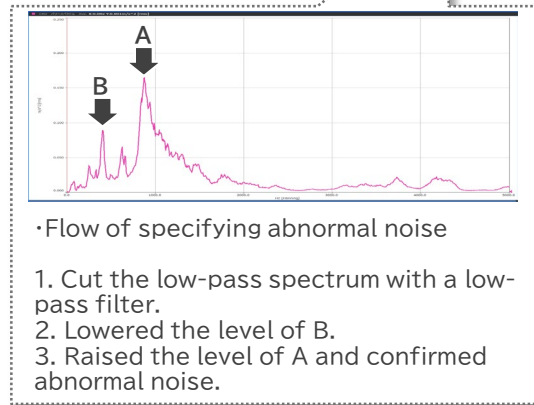
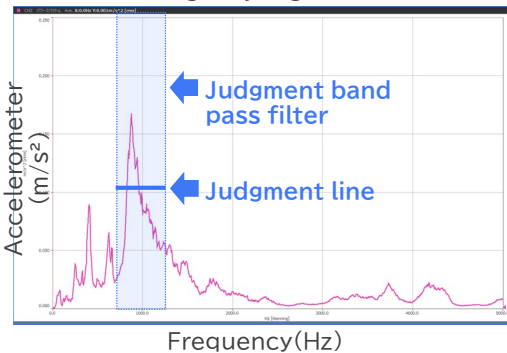
<Comparison good and defective>



<Specifying abnormal sound>



<Setting of judgment line>



~Results~

- Confirmed the difference between good and defective products by filtering, and identified the frequency of abnormal vibration.
- Filter in a specific frequency band to determine the judgment line

~System configuration~

	Model	Product name
①	DS-5100	Main unit
①	DS-0526	6ch 40kHz Input unit
②	OS-5100	Platform
②	OS-0522	FFT Analysis Function
②	OS-0512	Hardware Connection Function
②	OS-0521	Digital Filter Function
③	NP-3331B	Accelerometer with built-in preamplifier