

DS-0321 FFT Analysis Software

Operation manual

Basic operation procedure for Configuration Setting

The Configuration window is used to make various settings and operations of the DS-0321 FFT Analysis Software. All the settings required for measurement and analysis are included in "Configuration".

The "Configuration" window can be opened from the menu bar or from the pop-up menu displayed by right-clicking on the graph window.

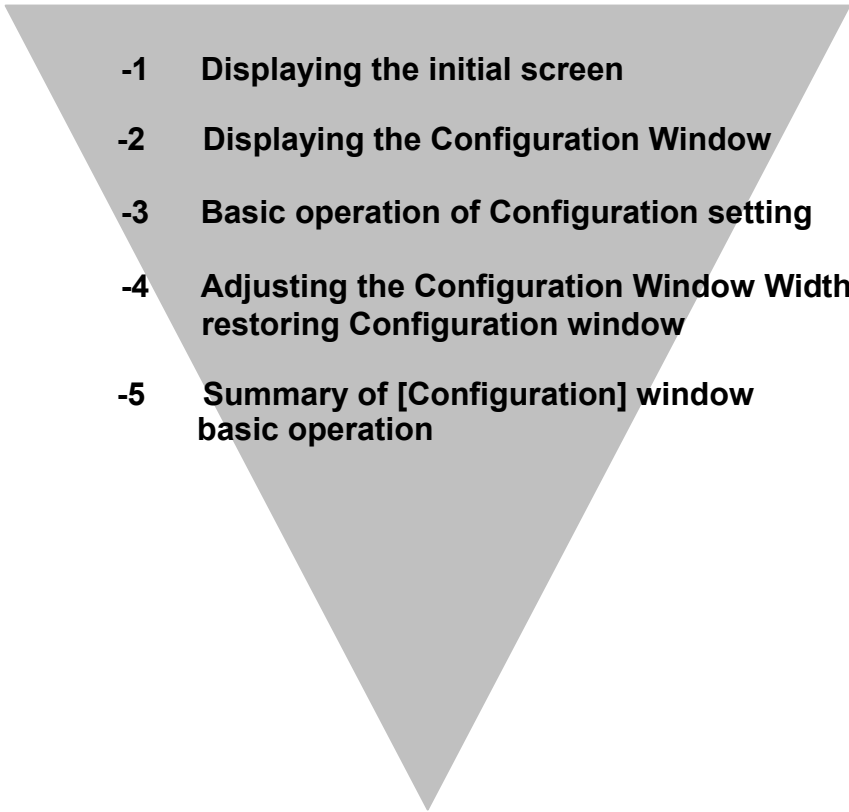
This instruction manual describes basic operations of Configuration taking Input/Output Setting for example.

Pay attention to marks 「▼」 or buttons displayed.

Operations allow you to double-click.

Functions of other setting items are not described in this manual. For details on the other functions, refer to the separate simplified manual.

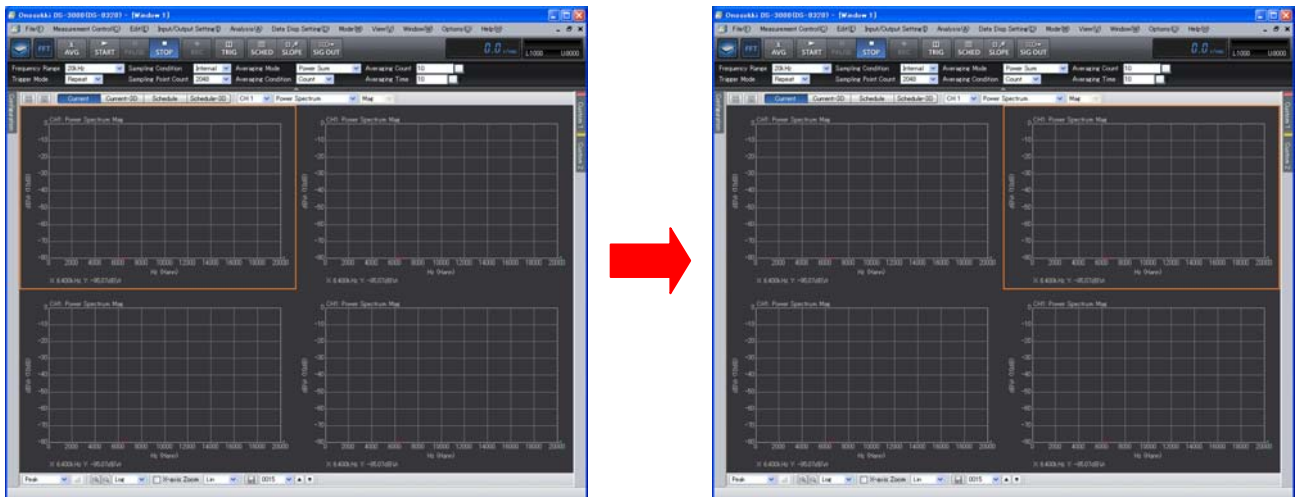
■ Operation Flow

- 
- 1 **Displaying the initial screen**
 - 2 **Displaying the Configuration Window**
 - 3 **Basic operation of Configuration setting**
 - 4 **Adjusting the Configuration Window Width and restoring Configuration window**
 - 5 **Summary of [Configuration] window basic operation**

■ Operation Procedure

1. Displaying the initial screen

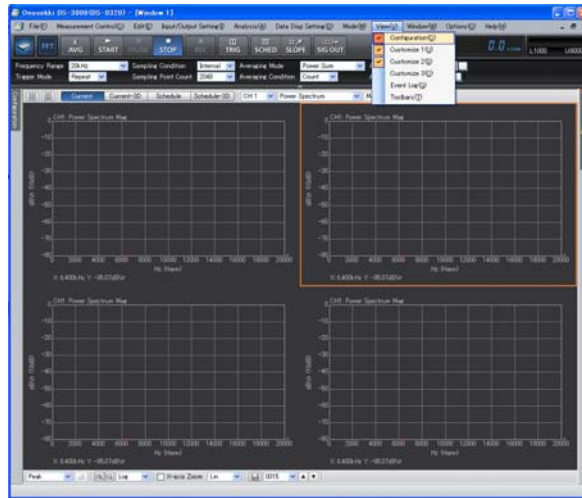
- ① The following screen will be displayed when you open the DS-0321 at the first time.
- ② When you click data part in the screen, it is enclosed with orange box lines to show that it is active, called active screen. The settings in the "Configuration" window are reflected in the active screen.



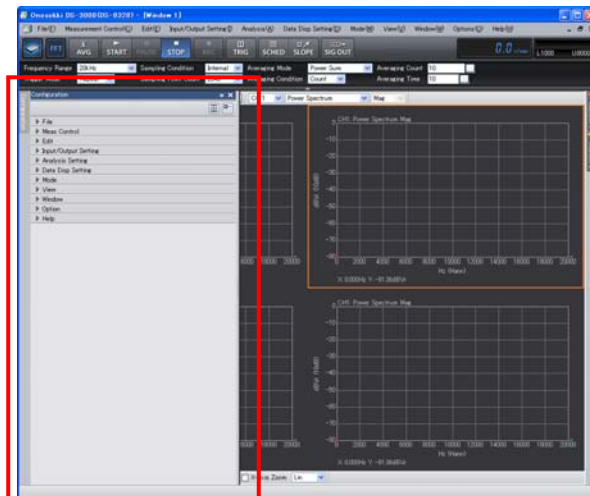
- When you click in the graph, it is enclosed with orange box lines to show that it is active.
- The settings in the "Configuration" window are reflected in the active screen partition, except for the measurement items related to all the channels, including the frequency and voltage ranges.
- No operations are permitted on some items unless the system is in the "STOP" state. For example, the character string indicating the average number of process times grays out during averaging measurement, meaning that the setting is unchangeable.

2. Displaying the Configuration Window

- ① Click "View" > "Configuration" from the Main menu to open the "Configuration" window.



- ② "Configuration" window is displayed.



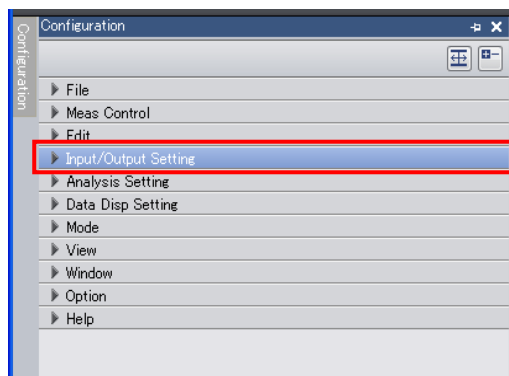
<Remarks>

Open/Close (▶) button	[▶] means there are more details about the item. Double-click to open, and double-click again to close.
(▽) button	[▽] means there are details about the items. Click the character item to open.
	Click to execute the command.
	Click to show the dialog box for detailed condition setting.
	Click to switch ON and OFF : OFF state : ON state
	Click to switch ON and OFF : OFF state : ON state
	Click to show one of the following dialog box. <ul style="list-style-type: none"> • To open a folder : shows [Browse For Folder] dialog box. • To open a file : shows [Open] dialog box • To input text : shows [Text Input] dialog box • To input numeric value : shows [Numeric Input] dialog box.

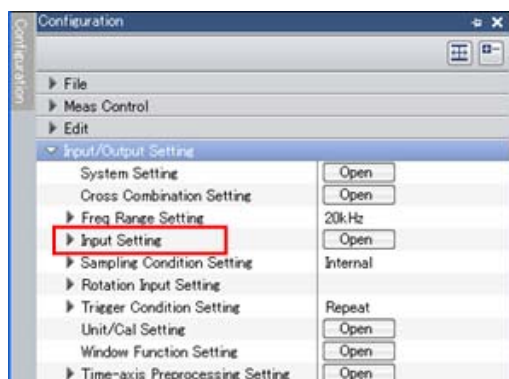
3. Basic operation of Configuration setting

-1. Input setting

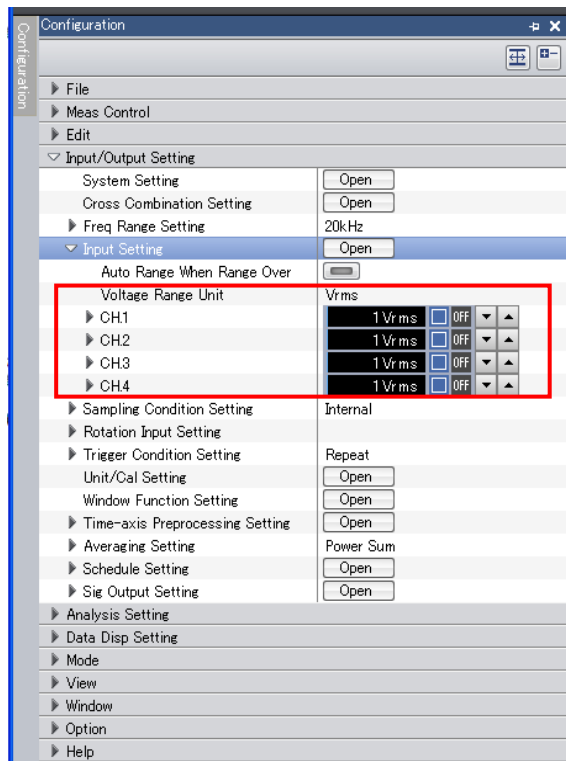
- ① Double-click [▶ Input/Output Setting] in [Configuration] to open Configuration window. [▶] means there are more details about the item. To close the [Input/Output Setting] window, double-click again.



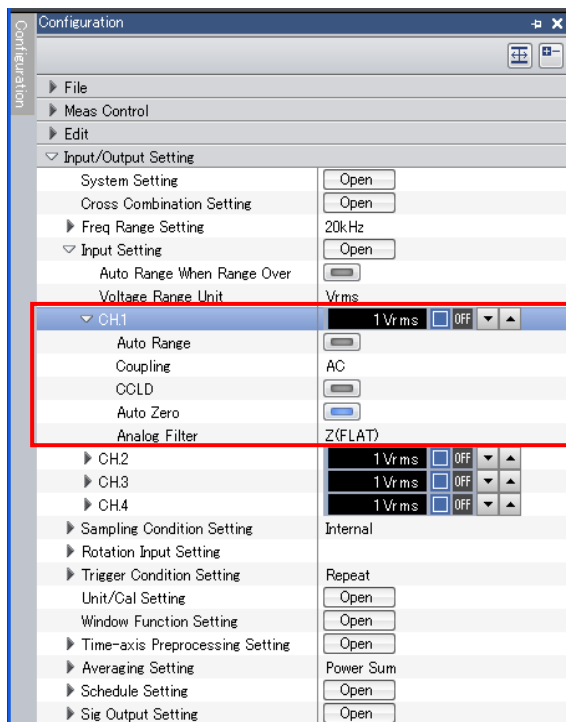
- ② Double-click the [▶ Input/Output Setting] to open the underlying detailed item.



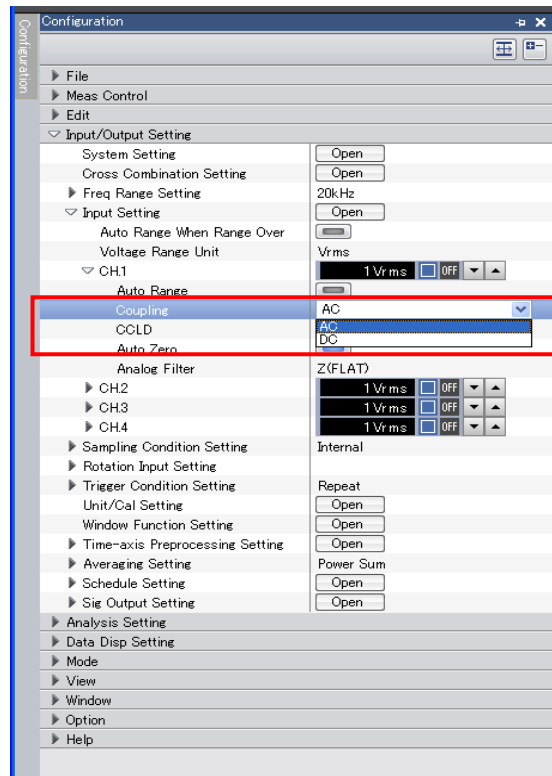
- ③ In the window of detailed item, ▼ or ▲ button allows to change the setting. Current setting is displayed in the right column.



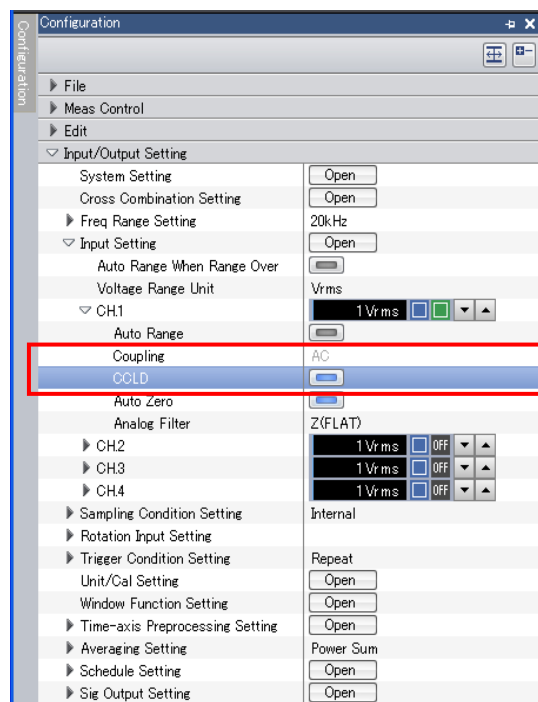
- ④ Click [▶ CH1] to open setting window.



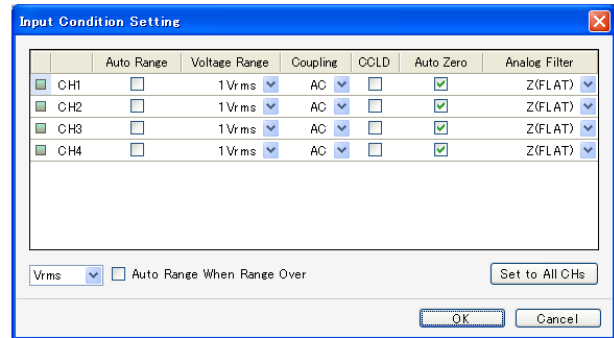
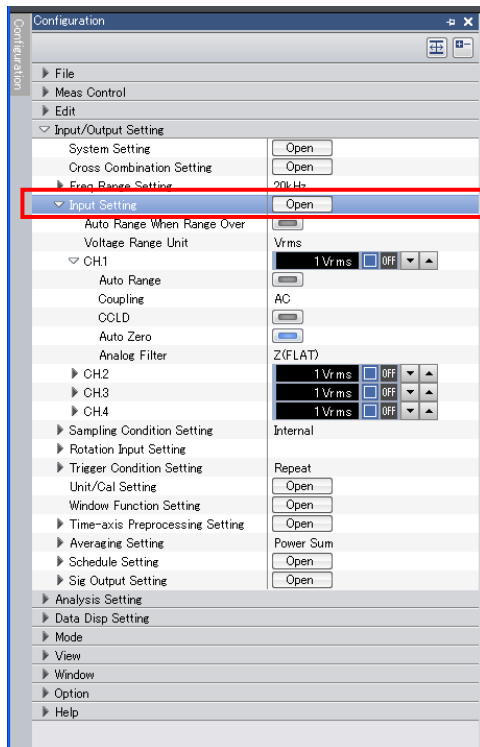
- ⑤ Click [Coupling] allows to select input coupling [AC] or [DC]. When [CCLD] in the [Coupling] is ON, only [AC] is selectable. (The input of [CCLD] should be [AC].)
Please note that it may have this kind of restriction on other setting.



- ⑥ To enable [CCLD] input, click button on the right column. button is replaced and DC24V/4mA is supplied to the CCLD applicable detector. (CCLD input is ON.) This function is used for accelerometer that is applicable to CCLD. Click button again to turn OFF the [CCLD] input. The [CCLD] and [Auto zero] are ON in the following figure.

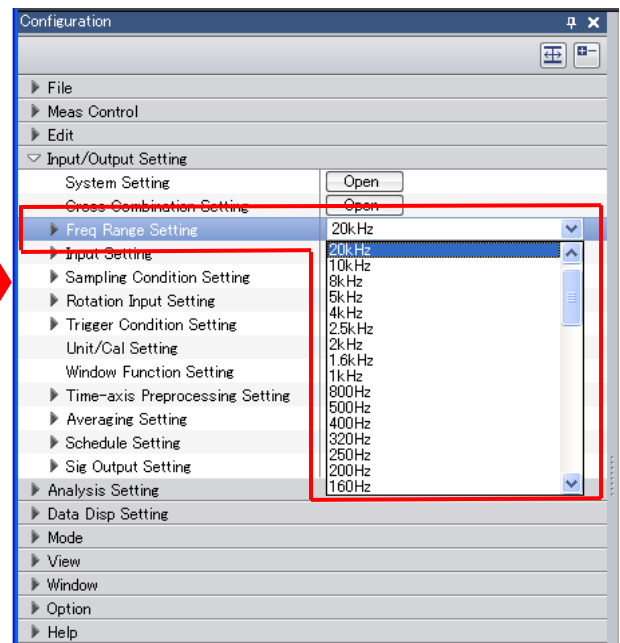
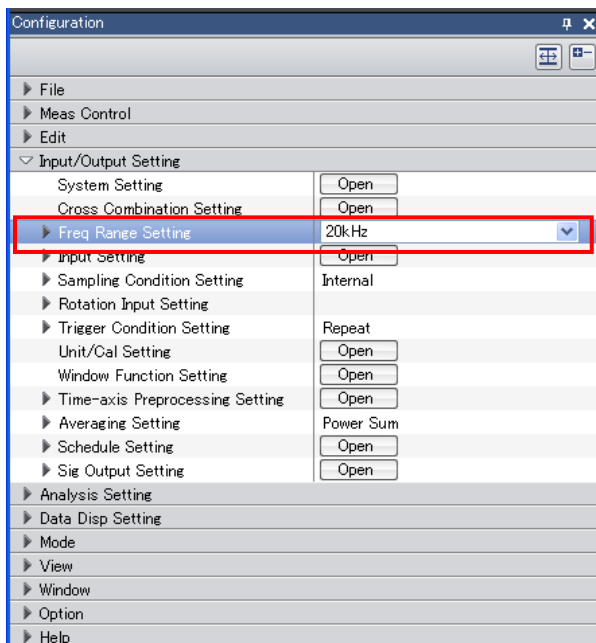


- ⑦ To change setting on [CH1] to [CH4], click [Open] button in [Input Setting] window. [Input Condition Setting] window is opened and the settings from [CH1] to [CH4] can be changed at once.




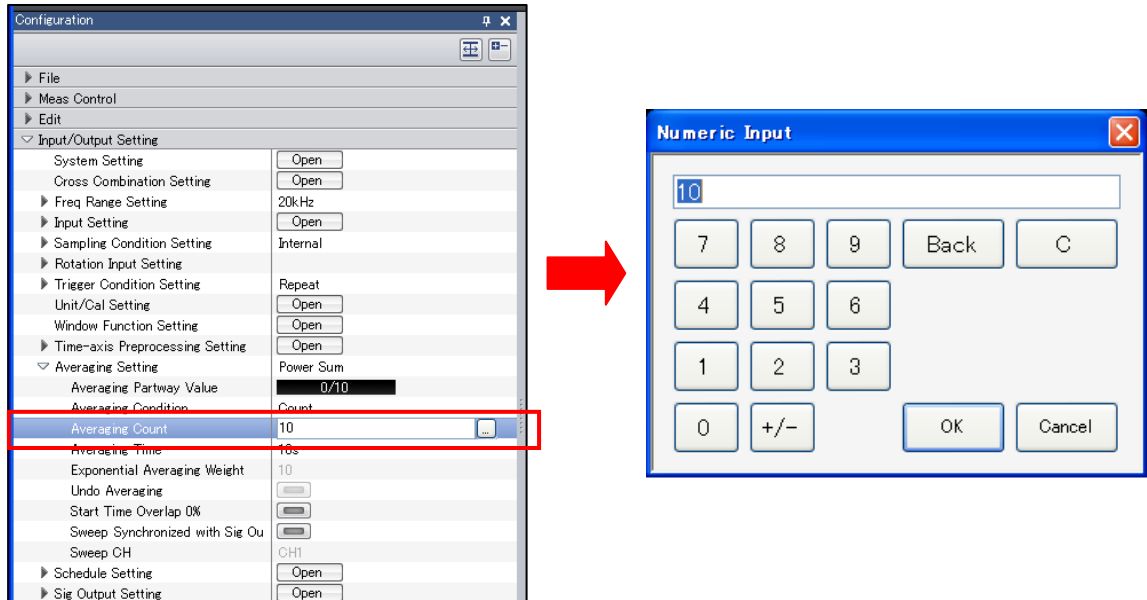
-2. Setting frequency range

- ① To set frequency range, click [Input/Output Setting]> [Freq Range Setting]. A right column shows the frequency range currently set. Click the right button of the column to select frequency range from the pull-down menu. [20 kHz] is selected in the following example.




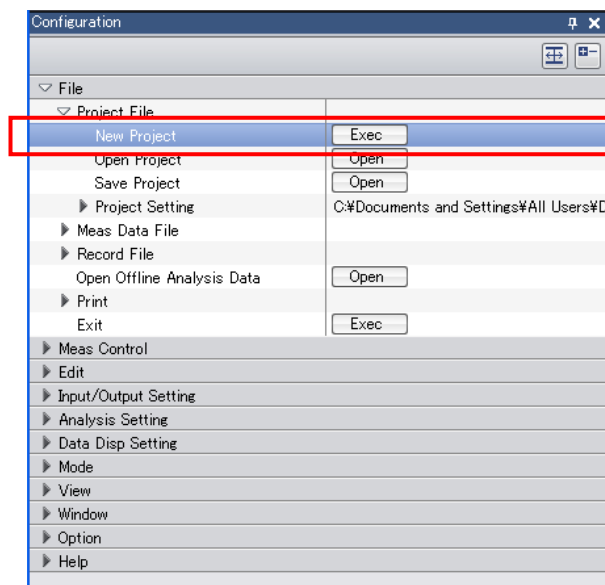
-3. Setting the number of averaging times

- ① Double-click [Input/Output Setting]>[▶ Averaging Setting] to see detailed items. [Averaging Count] shows the number of averaging time currently set.
- ② To change the number of averaging time, click the right  button of the column. Since [Numeric Input] dialog box opens, key in the numerical value to set.




-4. File Setting

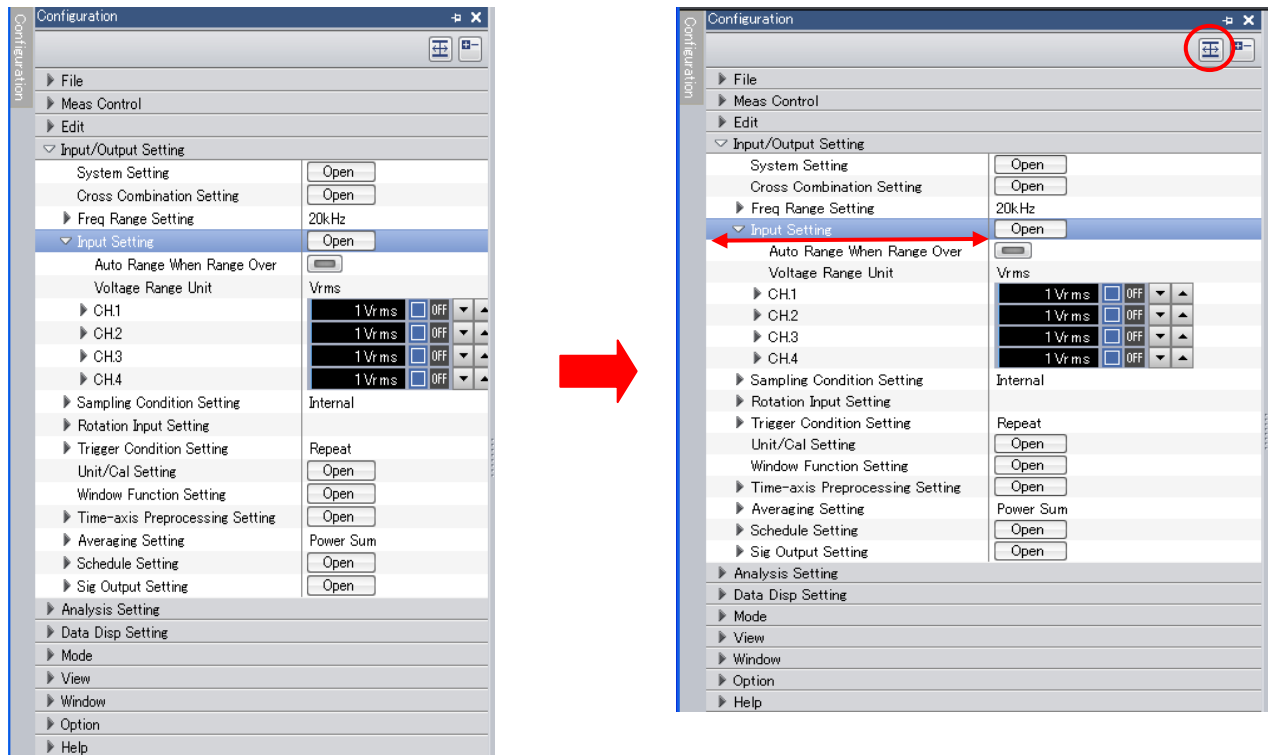
- ① Click [Configuration] window > [▶File] >[Project File] > [New Project] > . The window currently displaying is closed, and a window opens as a new project (measurement condition: initial setting).



4. Adjusting the Configuration Window Width and restoring Configuration window


-1. Adjusting the Configuration Window Width

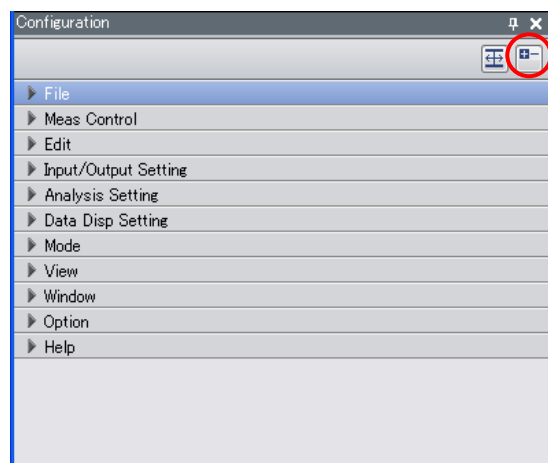
Place a mouse over the line to show column width adjustment mark. The column can be adjusted by dragging the line so that you may like. A click of the top-right an [ Automatic display size adjustment button] adjusts the left column automatically.



-2. Restoring

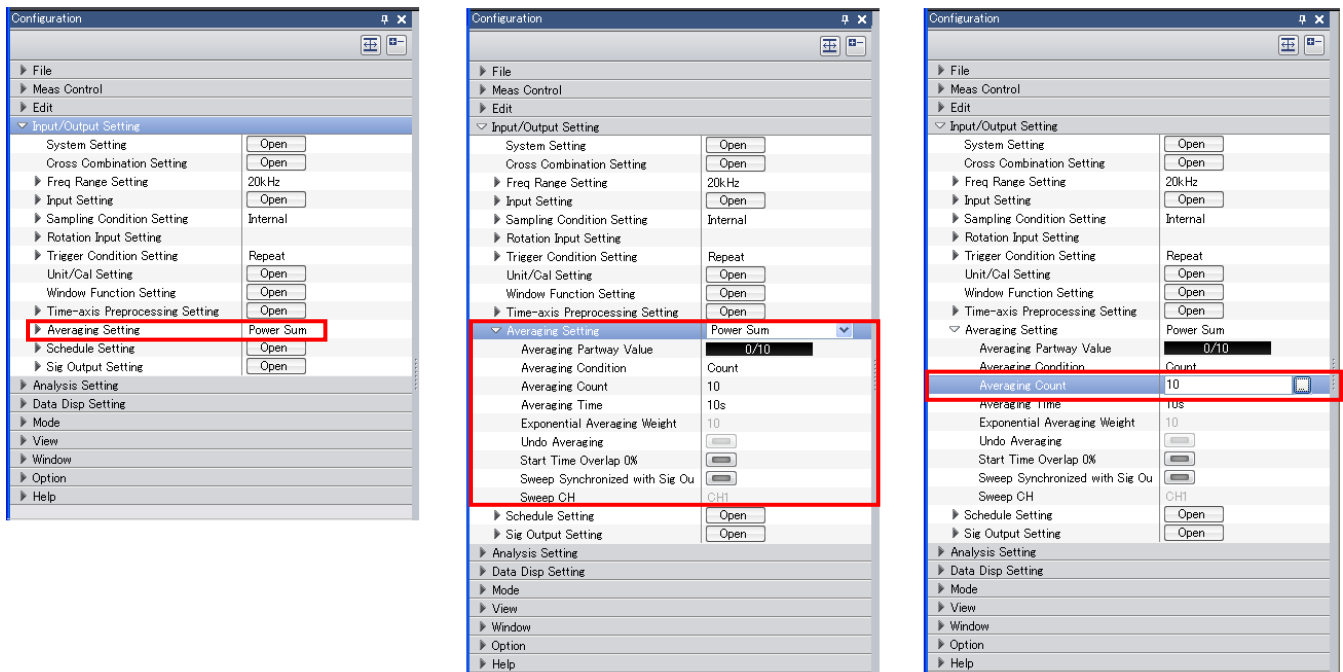
Clicking the "Store" button () stores all expanded items. Double-click the shown item to hide it.

To hide all showing items, click the  button. If too many items are shown and cannot be displayed in a screen, hide all items and then show only required items.



5. Summary of [Configuration] window basic operation

- ① You can see many kinds of buttons (ON/OFF button, selection button, key-in button, and Exec button etc.) and current conditions you have set when you open all the underlying items in the [Configuration] window.

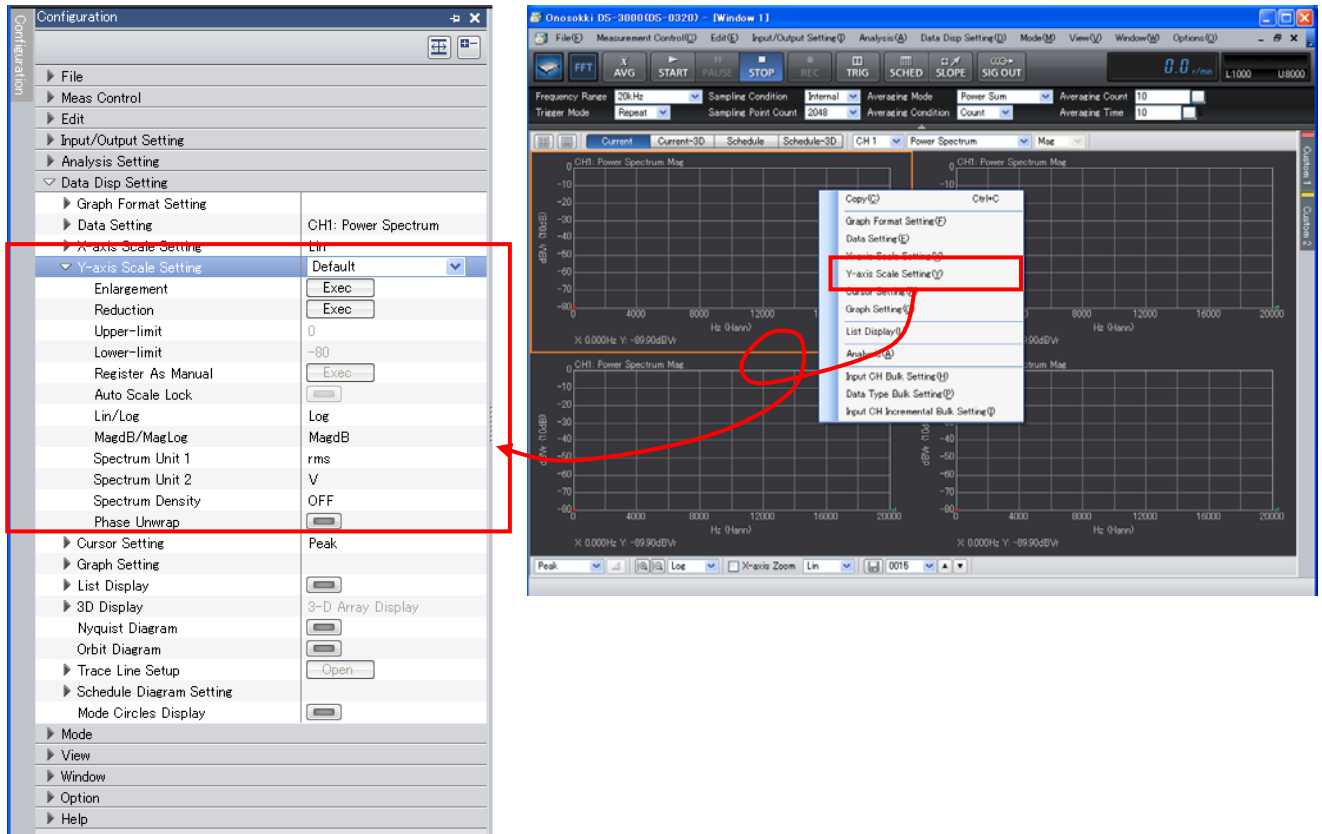


The left above shows the condition that [Averaging Setting] > [Power Sum] is set.

The middle one shows the details of [Averaging Setting].

The right one shows the condition of [Averaging count] that is set to “10” with [Numeric Input] dialog box (key in button).

- ② Right-click on a data graph opens a pop-up menu. Click an item in the pop-up menu to open the details of the setting in the Configuration window. .



Operational procedure of [Configuration] is basically same manner in the DS-3000 series. Through understandings of [Configuration] helps the use of the DS-3000 series. For details of each setting item, see another operation manual.