

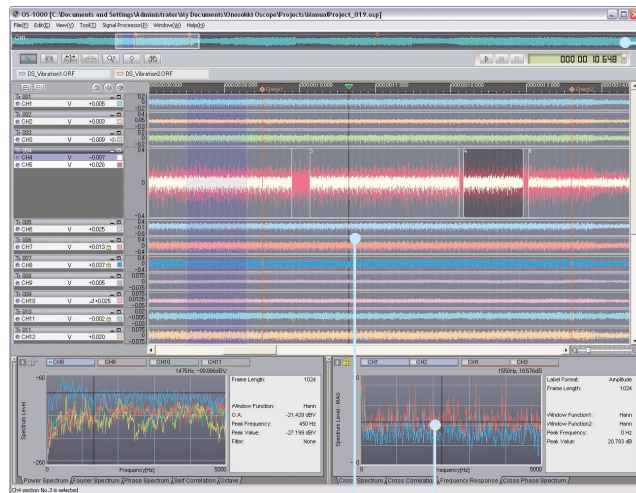
Effectively Utilize Data and make good progress with analysis

Time-Series Data Analysis Software

OS-1000

Visualize Huge Amount of Time-Series Data,
Extracting only the data required to make your data-edit and analysis simple.

Huge amount of time-series data are occurring in diverse fields of research and development as well as academic pursuits. There possibly be many cases where you cannot extract necessary partial data from file even if you want to utilize it. OS-1000 is a time-series data analysis software for solving such a problem. It mines only the required data from large amount of time-series data, enables efficient speedy analysis and evaluation of data.



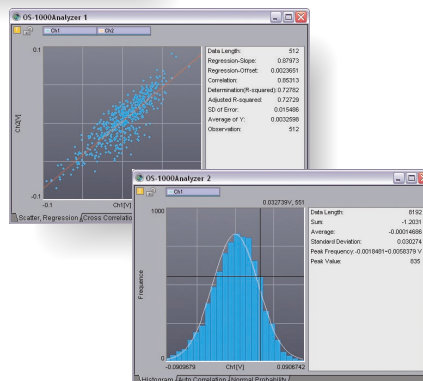
Navi (Navigation) View
Displays the entire waveform image of a selected item. You can figure out entire spectrum at one view. Moreover, the surrounded area called Zoom Area can be moved quickly to where you want to analyze as well as zooming in and out.

Main Field

Displays the waveform of multiple items simultaneously. In the main field, multiple files such as previous data can be overlaid on the same track. The excellent GUI makes it easier to divide and move waveforms through mouse operations.

Analysis Window

Provides with wide variations of analysis functions such as statistics analysis and frequency analysis. You can analyze lightly and quickly with huge amount of data just by moving the cursor to the area where you want to analyze.



Importing huge amount of time-series data lightly

Processing of huge amount of time-series data requires large memory capacity. The OS-1000 can handle large quantities of data regardless of the memory capacity of the PC. Since the OS-1000 supports a variety of file formats, you can use it in any application environment.

Extracting only the data required for analysis

Large quantities of measurement data contain a lot of data which are not required for analysis. By cleansing such data, the OS-1000 thins out unnecessary portions to extract only the required data. You can save the data as small-sized data files and process them efficiently using your secondary processing software.

Diverse analysis functions for accurate extraction of data

The OS-1000 has wide variety of analysis functions. It is very useful for searching for the required data contained in huge amount of data from the mathematical viewpoint. It is provided with the following optional functions:

- Histogram, regression analysis, standard deviation, and other statistical analysis functions.
- Power spectrum, frequency response function, and other frequency analysis functions.

OS-1000

Basic Specifications

Item	Specifications	Remarks
Basic functions	Waveform editing functions	
	Numerical data display and editing functions	
	Marker function	
	Sound playback function	•The synchronization accuracy depends on the operating environment, processing conditions, and sampling frequency.
	Search function	
	Sectional statistical function	
Display	Number of tracks	Up to 1000 tracks
	Number of display items	Up to 10 items for each track
Data import capacity	Number of files	Up to 10 files
	Number of channels	Up to 512 channels
	Number of data items	Up to 5 hundred million points •Number of channels × Number of records
Sampling frequency	0.01 Hz to 1MHz	
Data import format	ASCII file format	*.csv, *.txt, *.*
	Sound file format	*.wav
	ORF file format	*.orf
	AU-4100A file format	*.inf
	VARTS-II format	*.dat
	FAMS-8000 file format	*.thd, *.lhd
	KY-1000 file format	*.trn, *.frz, *.ave, *.log, *.txt
	TEAC Corporation	*.hdr ([DR-C, DR-F/M, DS] Series, GX-1, LX-10/20, LX-110/120, es8)
	TAFFmat file format	
	HIOKI E.E. Corporation	*.mem(8861-50/8860-50,8861/8860,8855,8842/8841,8835-01,8826,8808/8807)
	MEMORY HiCODER file format	
	Yokogawa Electric Corporation	*wvf, *.wdf ([DL750, DL9000, DL7400, DL1700, DL1700E, DL1600] Series, WE7000, SL1400, SL1000)
Data export format	Comma-separated value format	*.csv
	OC-1000 transfer function	OC-1000(option)required
Signal processing functions(cleansing)	Moving Average	
	Simple Operation	
	Extractor	
	Time Calculus	

Operating Environment

Item	Specifications	Remarks
OS	Microsoft® Windows® 2000/Windows® XP	-
CPU	Intel® Pentium® III 1 GHz or higher	-
Memory	512 MB or more	-
Hard disk	Available space of 500 MB or more	-
Display resolution	1024 x 768 or higher	1280 x 1024 recommended

*The optimal CPU, memory, and hard disk specifications depend on the size of the data to be processed.

- OS-1000 is a registered trademark or trademark of Ono Sokki Co., Ltd. in Japan.
- Windows® 2000, Windows® XP, and Microsoft® are registered trademarks or trademarks of Microsoft Corporation of the United States and other countries.
- Intel®, Pentium® are registered trademarks of Intel Corporation of the United States and other countries.

ONOSOKKI

*Specifications are subject to change without prior notice.
URL:<http://www.onosokki.co.jp/English/english.htm>

U.S.A & CANADA

Ono Sokki Technology Inc.
2171 Executive Drive, Suite 400,
Addison, IL 60101, U.S.A.
Phone : 630-627-9700
Fax : 630-627-0004
E-mail : info@onosokki.net
<http://www.onosokki.net>

THAILAND

Ono Sokki (Thailand) Co., Ltd.
29/67 Moo 5 Tivanon Road,
Pakkred, Nonthaburi 11120,
Thailand
Phone : 02-964-3884
Fax : 02-964-3887
E-mail : osth_sales@onosokki.co.jp

P.R.CHINA

Ono Sokki Beijing Office
Beijing Jing Guang Center 3510,
Hu Jia Lou, Chao Yang Qu,
Beijing 100020, P.R.China
Phone : 010-6597-3113
Fax : 010-6597-3114
E-mail : onosokki@public.bta.net.cn

WORLDWIDE

Ono Sokki Co., Ltd.
1-16-1 Hakusan, Midori-ku,
Yokohama 226-8507, Japan
Phone : 045-935-3976
Fax : 045-930-1906
E-mail : overseas@onosokki.co.jp